



Installation Instructions

Model:	Honda Talon
Description:	Stage 5 Install
Part Number:	MBQT-STG5-1
Assembly Time:	210 Mins (3.5-Hours)

Before you begin, read through these instructions and check that all parts are present. Always disconnect negative battery terminal, prior to installation. Please note that MB Quart cannot assume any responsibility for damage resulting from incorrect installation.

Parts List		
No.	Component Name	Qty
1	GMR-LED with Housing (MBQT-RAD-1)	1
2	6.5in Dash Speakers (MBQT-FPOD-1)	2
3	8" Subwoofer w/Enclosure (MBQT-SUB-1)	1
4	6.5" Rear Pod Speakers	2
5	MBQT-ACC-1	1
6	NA2-400.1 Amplifier	1
7	NA2-400.2 Amplifier	1

Tools Required	
1	Bojo Tool
2	Panel Clip Pliers
3	10mm open box wrench
4	10mm and 12mm socket
5	½" socket
6	Ratchet
7	Small flat head screwdriver
8	Phillips screwdriver
9	3mm and 5mm Allen Wrench
10	¼" and ½" drill bit or stepper bit
11	1" hole saw
12	Drill
13	Rotary tool similar to a Dremel
14	Heat Gun or Lighter
15	Crimper

Disassembly

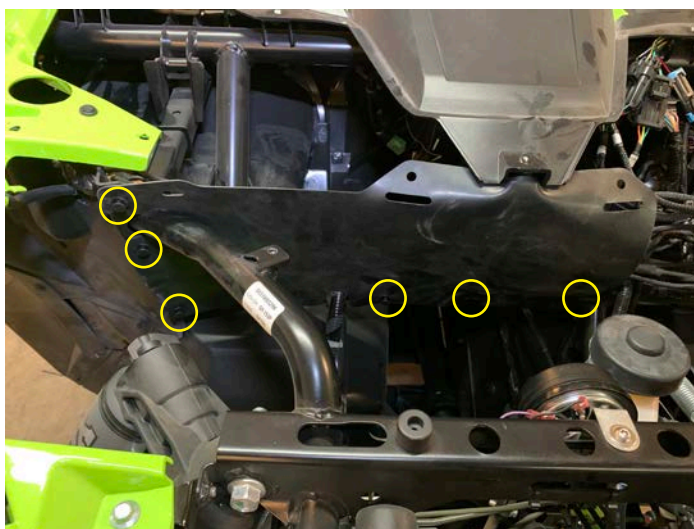
- Remove hood by turning two latches



- Remove four 10mm bolts, four push pins, and five 5mm allen bolts to remove top of dash



- Remove half mud guard with six push pins



Disassembly

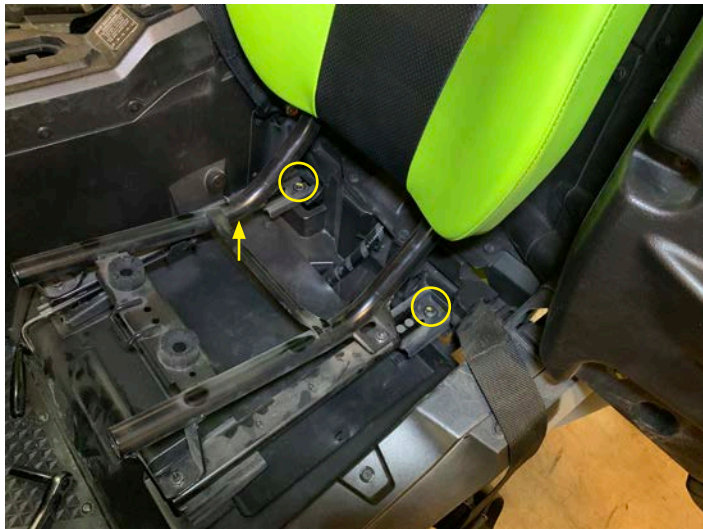
- Release latch at front of driver and passenger lower cushions to remove



- Remove two 12mm bolts on front of drivers seat



- Slide driver seat forward and remove two 12mm bolts on rear of seat



Disassembly

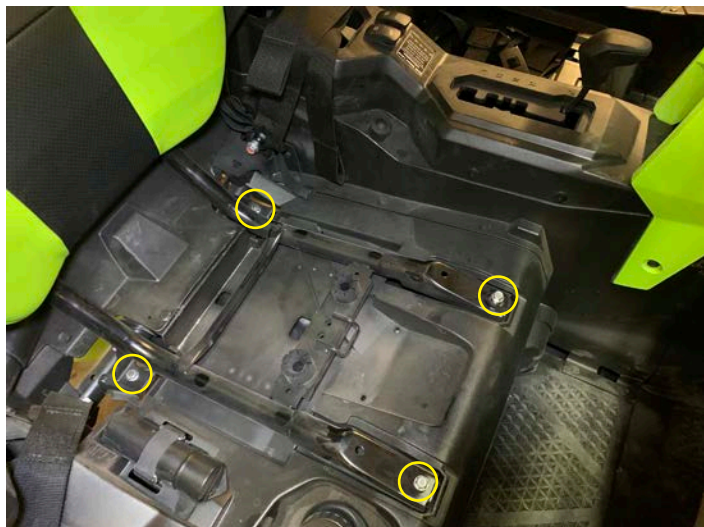
- Remove drivers seat



- Remove two push pins on front of passenger seat and then remove the covers



- Remove two 12mm bolts and two 12mm nuts on the passenger seat base



Disassembly

- Remove passenger seat from vehicle



- Pull top fuse access panel toward front of vehicle and remove



Disassembly

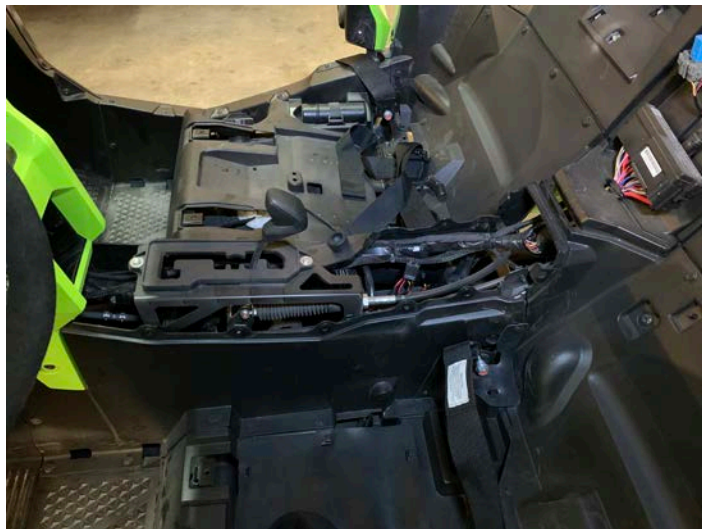
- Using a small flat head screwdriver push in the center and remove the six clips on the passenger side



- Remove the five push pins on the driver side console like on the passenger side



- Place gear selector to "H" and remove the top of the center console



Disassembly

- Lift up the bottom half of the steering column rubber boot



- Remove the two push pins behind the rubber boot



- Remove the two push pins on the bottom of steering column cover



Disassembly

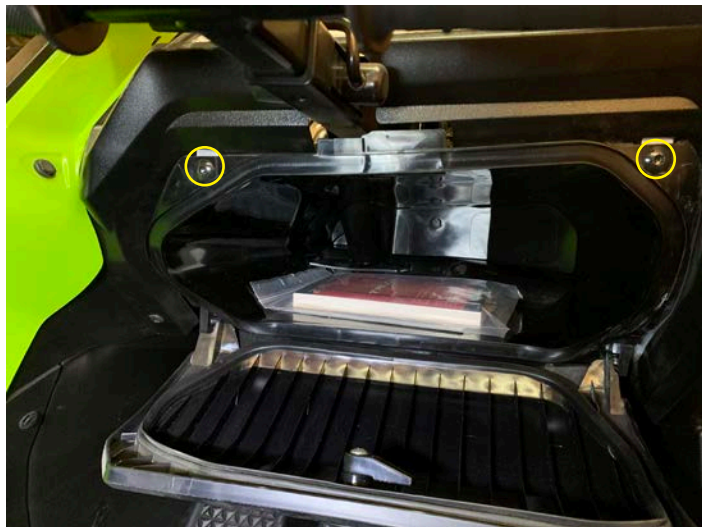
- Remove the bottom steering wheel cover



- Remove one 5mm allen bolt and one push pin from the drivers kick area



- Remove two 5mm allen bolts from behind glove box door



Disassembly

- Remove one push pin in the back of the glove box



- Remove three push pins from below the glove box



- Remove glove box



Disassembly

- Remove one 5mm allen bolt and one push pin from passenger kick area



- Remove rear cargo area by turning two latches



- Remove the air intake cover from the passenger rear fender area by removing ten push pins (Each location to follow)



Disassembly

- Remove two lower push pins



- Remove two upper push pins.
(Arrow one is not pictured)



- Remove three push pins from
inner lip of fender



Dash Speaker Installation

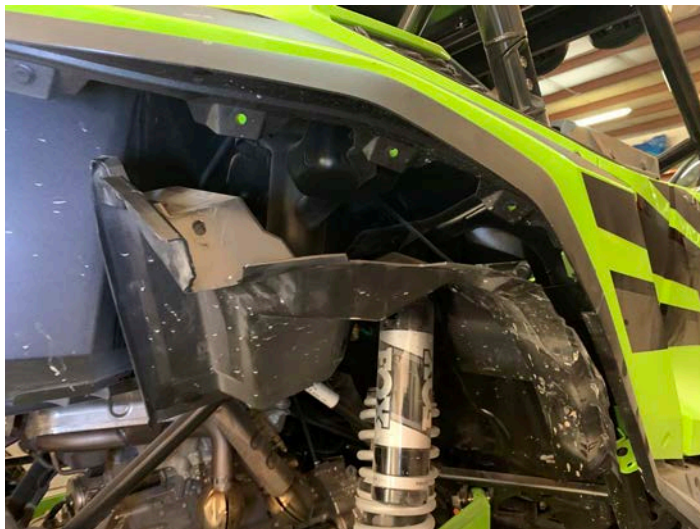
- Remove two push pins from outer fender



- Remove two push pins behind the passenger rear shock



- Pull down or remove air intake cover



Front Speaker Pod Installation

- Drill a ½" hole, 5/8" down from the edge, and 2 ¼" over (Control the depth of bit to not go too deep)



- Pass the wire from the driver side pod through the hole you drilled



- Position pod and lightly thread a 5/16" bolt and washer from the front fender area into the threaded insert on the back of the pod



Front Speaker Pod Installation

- Install the M6 x 40mm bolt and washer through the enclosure into the factory bolt location



- Tighten the 5/16" bolt in the fender area



- Repeat previous steps on passenger side



Radio & Dash Kit Installation

- Place the metal u-bracket at the top of the pocket and mark the bottom portion to be cut out with a rotary tool



- Drill two 1/4" holes using the u-bracket as a guide in the back of the pocket



- Install two 5mm allen bolts through the bracket and pocket and install a flat washer and lock nut (You may need to ask a friend for help or can reach on both sides of the dash to tighten)



Radio & Dash Kit Installation

- Slide the dash panel with the bevel and MB Quart logo facing outward like the image



- Pass the wires from the radio through the hole below the u-bracket in the pocket



- Install four M4 cap head bolts through the face of the radio and dash into the u-bracket and tighten



Radio & Dash Kit Installation

- Install covers on each side of radio



Amplifiers and Plate Installation

- Adjust the NA2-400.2 amplifiers gain and crossover settings as pictured.

NOTE

Gains all to the last "L" on Level
HPF to 100Hz going just past "P" on LP
LPF is turned all the way down
X-Over to HP



- Adjust the NA2-400.1 amplifiers gain and crossover settings as pictured.

NOTE

Gains all to the last "L" on Level
Sub LPF to 100Hz going to "L" on LPF
Subsonic set to 35Hz going to "S" on
Subsonic Boost to 0dB

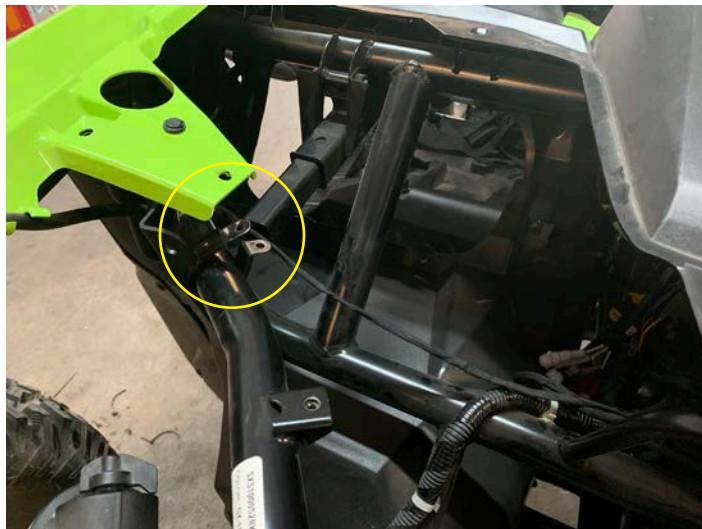


Amplifiers and Plate Installation

- Install the NA2-400.2 amplifier as pictured with four M4 Philips screws, washers, and lock nuts



- Install the rubber c-clamp around the tube as pictured



- Slide the top amplifier mount between the frame and top of dash as pictured



Amplifiers and Plate Installation

- Install the M6 button head bolt through the plate and c-clamp attaching from the bottom with a washer and lock nut



- Install the NA2-400.1 amplifier next to the two channel amplifier and secure with three M4 Philips screws, washers, and lock nuts

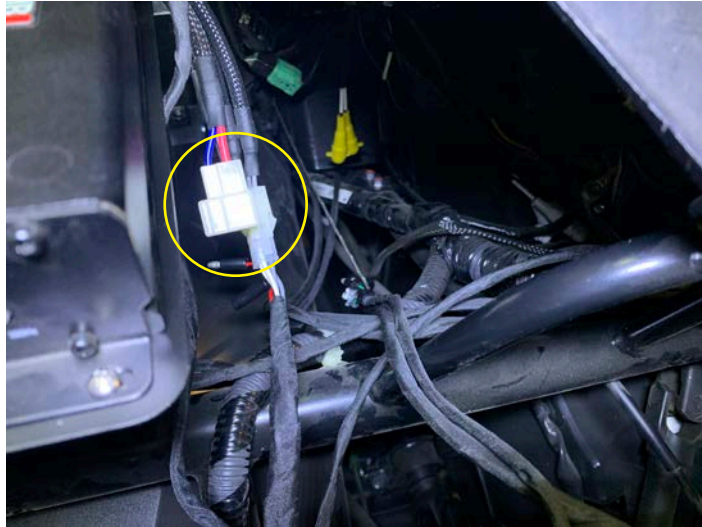
NOTE

May need to shift amplifier plate to the center of the vehicle to get the back left hardware secured

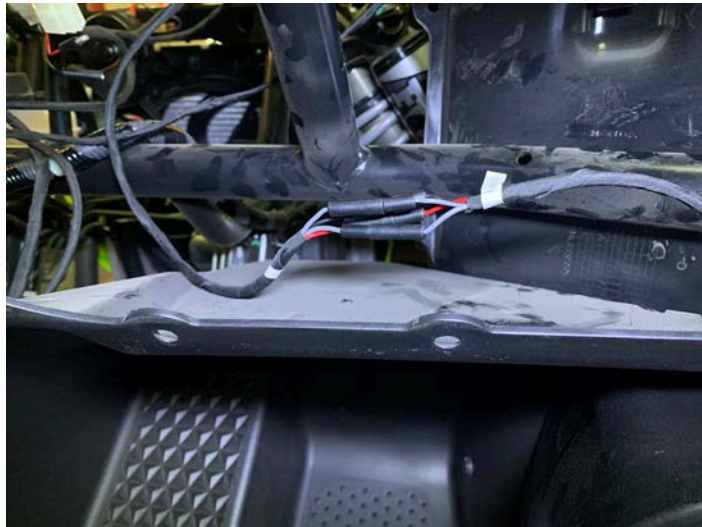


Wiring Installation

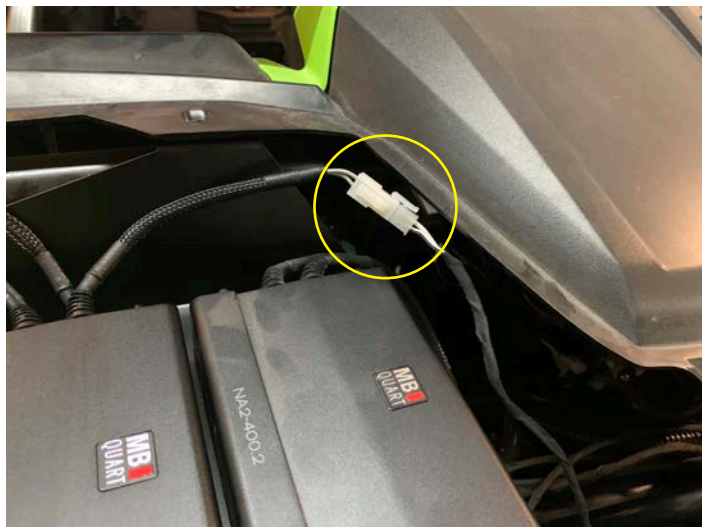
- Connect the speaker harness to the NA2-400.2 amplifier and route the driver and passenger speaker leads to the appropriate kick area



- Connect bullets of amplifier harness with respective front kick pods



- Plug subwoofer extension harness into the NA2-400.1 amplifier



Wiring Installation

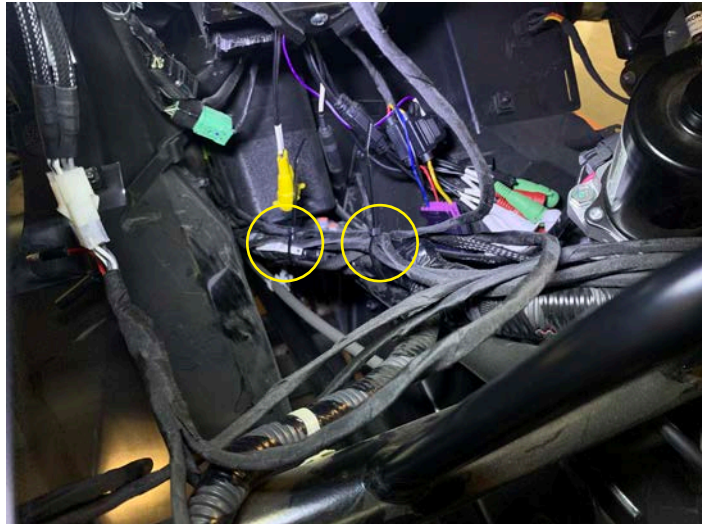
- Route subwoofer and rear speaker harnesses down toward center console going to the rear of the vehicle

NOTE

Use a fish tape passed from cabin toward front of vehicle to help pull wires



- Zip tie harnesses along with OEM harness



- If you have a four seat model, connect the extension harness



Wiring Installation

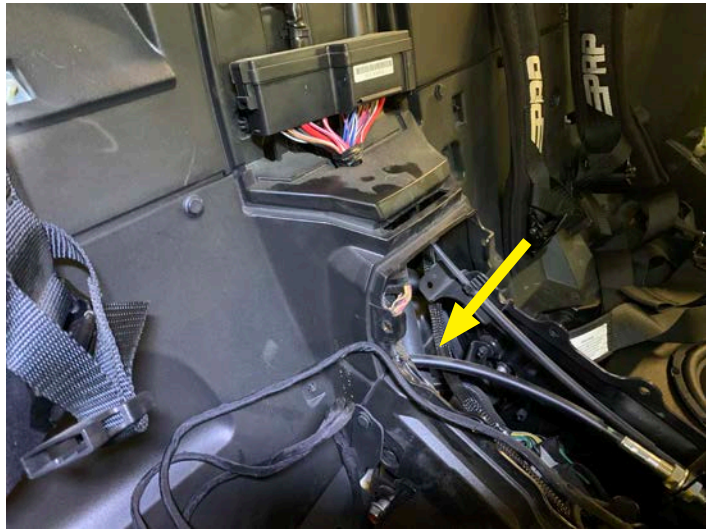
- Connect the rear speaker y-harness



- Zip tie wires in center console along the OEM harness



- Pass the wires through the rear firewall and upward between airbox and firewall



Wiring Installation

- Follow OEM wiring on each side zip tying speaker harnesses moving toward tail lights



- Zip tie wiring along OEM wiring

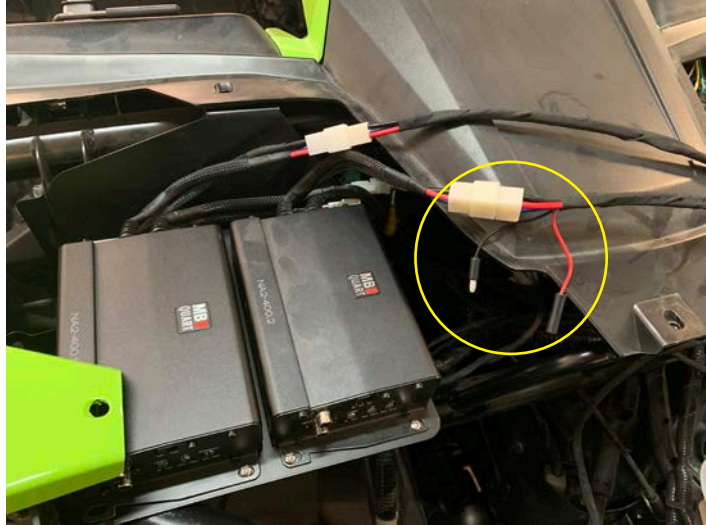


- Drill 1/2" hole on either side of the bed area as shown

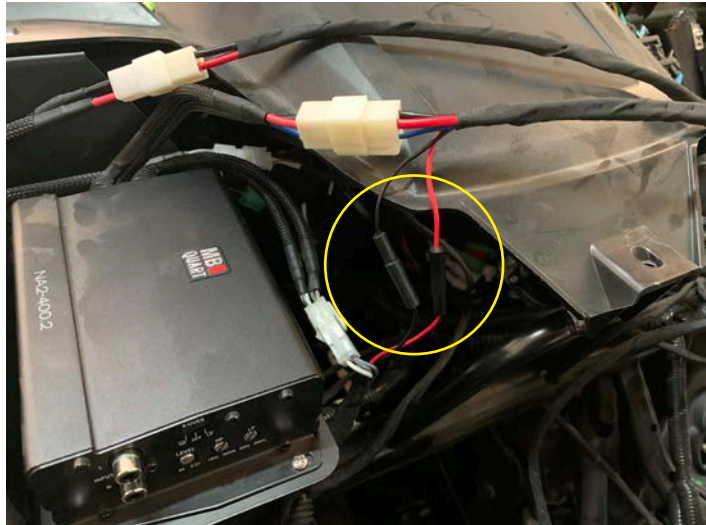


Wiring Installation

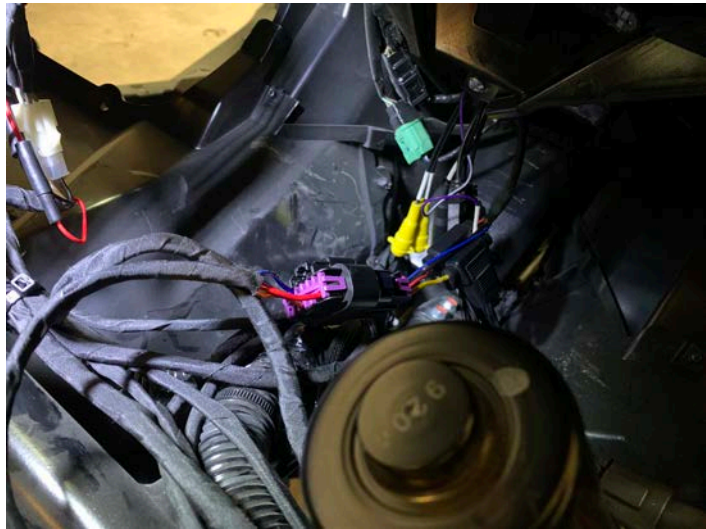
- Install power harness to each amplifier (Connector with bullets connects to NA2-400.2)



- Connect bullets from power harness to speaker harness (This is if you want to add optional LED rings at the speaker locations)



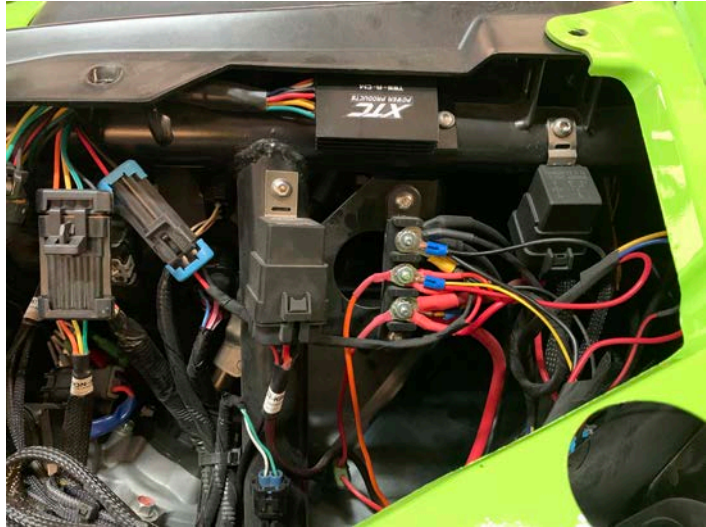
- Connect Delphi connector on power harness into the radio harness



Wiring Installation

- If you don't already have a buss bar installed you can connect to factory wiring (but we highly recommend a buss bar kit)

These are available from many aftermarket companies like XTC Power Products



- Plug RCA into the NA2-400.2 and run to the front RCA outputs of the radio

- Plug RCA into the NA2-400.1 and run to the front RCA outputs of the radio

Wiring Installation

- Drill a 1" hole in the side of the glovebox 3" from the front for the USB / AUX Port



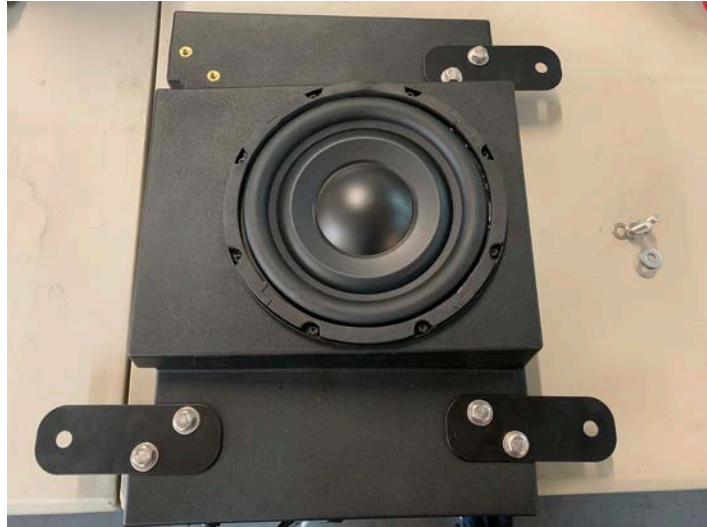
- Place the glove box back in the vehicle (We will install hardware during assembly portion of the manual)



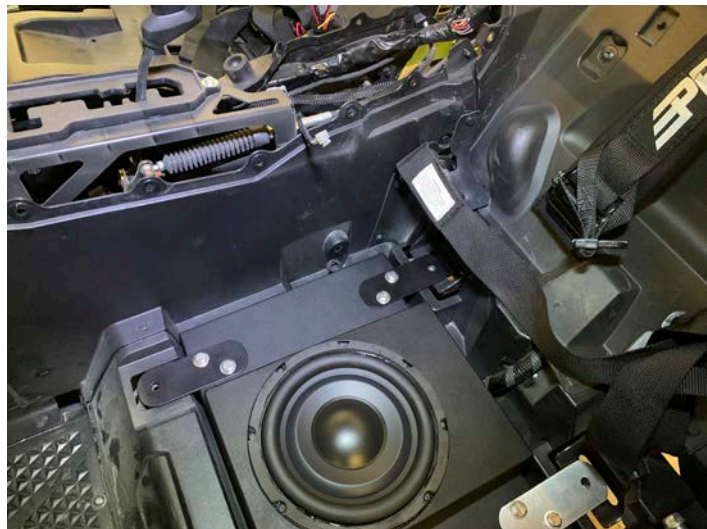
- Install the USB / Aux port into the 1" hole in the glove box and slide the rubber washer and nut on the backside and tighten (Connect the RCAs and USB from the USB / Aux port to the back of the radio)

Subwoofer Installation

- Install four brackets with 5/16" bolts and washers leaving them loose

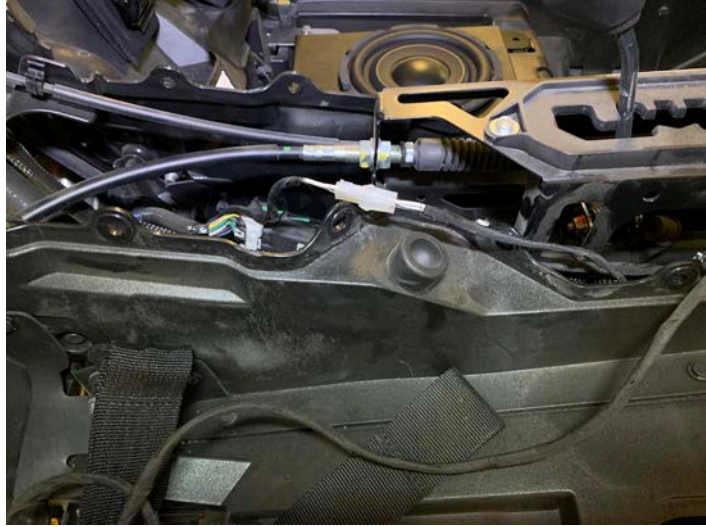


- Place subwoofer enclosure under driver seat area and pass the harness through small opening pictured and pull toward top of center console



Subwoofer Installation

- Connect the subwoofer enclosure harness to the amplifier harness in center console



- Align plates to seat mount holes and tighten



- All plates aligned



Rear Speaker Pod Installation

- Place the appropriate rubber insert for your tube diameter in the clamps



- Attach the pod to the roll cage at your desired location and secure with four M6 bolts tightening with a 5mm allen wrench (Repeat process for other pod)



- Adjust the alignment by loosening the M6 bolt as shown to swivel the speaker (When in the position you want then tighten the bolt)



Reassembly

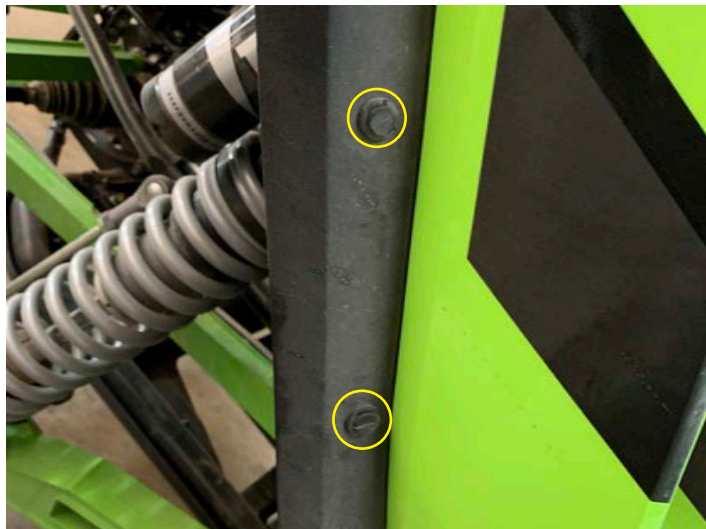
- Push up and install air intake cover



- Install two push pins behind the passenger rear shock



- Install two push pins from outer fender



Reassembly

- Install three push pins from inner lip of fender



- Install two upper push pins.
(Arrow one is not pictured)



- Install two lower push pins



Reassembly

- Install the air intake cover from the passenger rear fender area by installing ten push pins (Each location to follow)



- Install rear cargo area by turning two latches



- Install three push pins from below the glove box

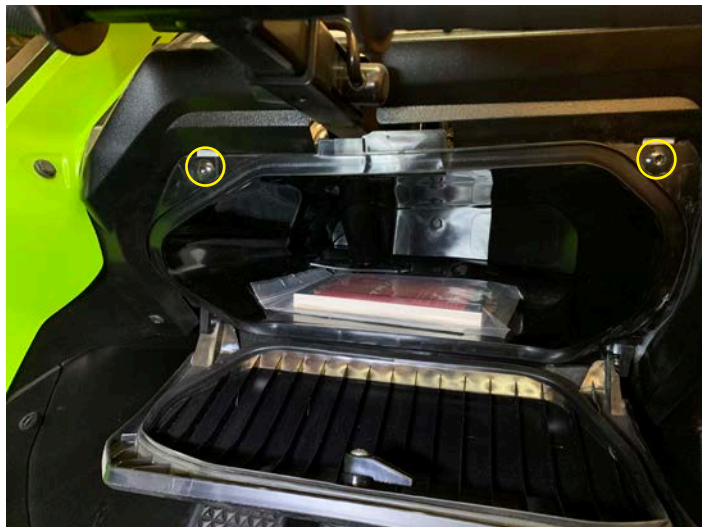


Reassembly

- Install one push pin in the back of the glove box



- Install two 5mm allen bolts from behind glove box door



- Install the bottom steering wheel cover



Reassembly

- Install the two push pins on the bottom of steering column cover



- Install the two push pins behind the rubber boot



- Reposition bottom half of the steering column rubber boot



Reassembly

- Place gear selector to “H” and install the top of the center console



- Install the five push pins on the driver side console like on the passenger side



- Using a small flat head screwdriver push in the center and install the six clips on the passenger side



Reassembly

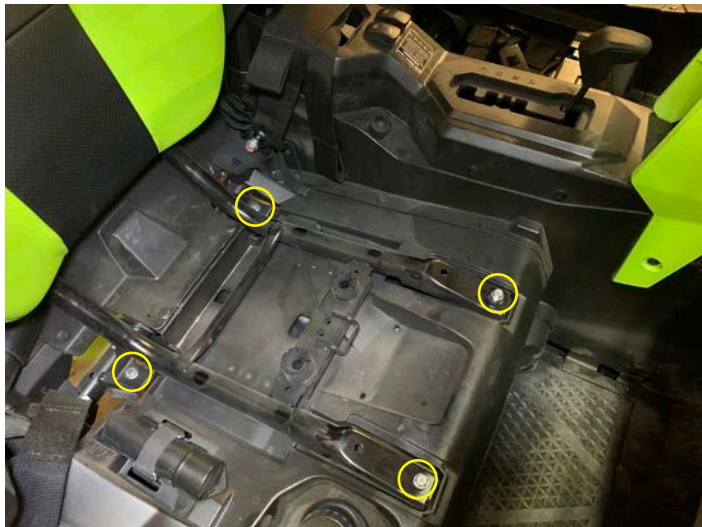
- Install top fuse access panel



- Install passenger seat from vehicle

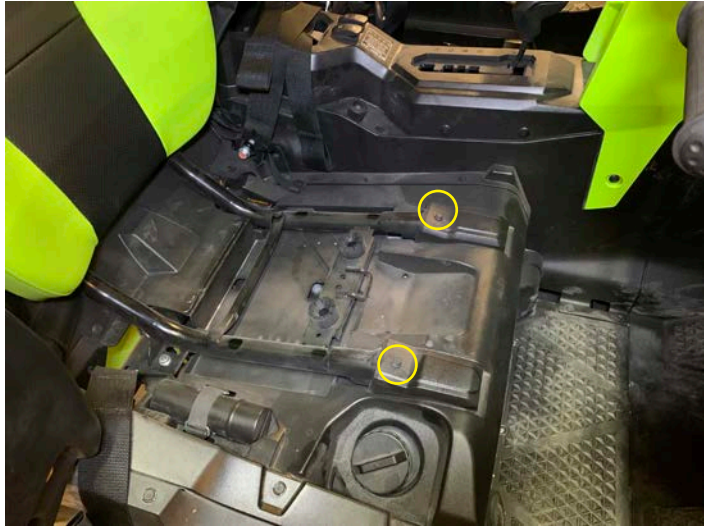


- Install two 12mm bolts and two 12mm nuts on the passenger seat base

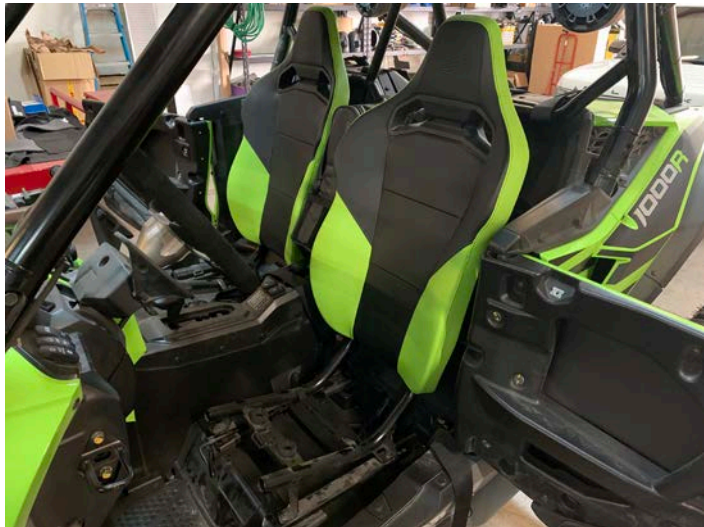


Reassembly

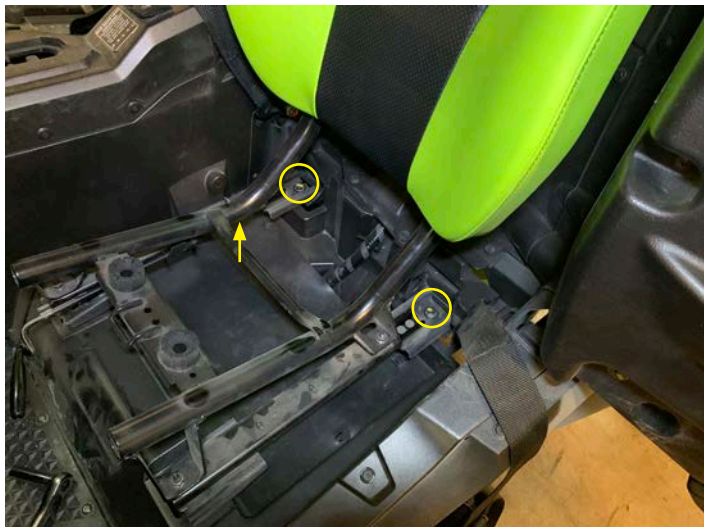
- Install two push pins on front of passenger seat and then remove the covers



- Install drivers seat



- Slide driver seat forward and install two 12mm bolts on rear of seat



Reassembly

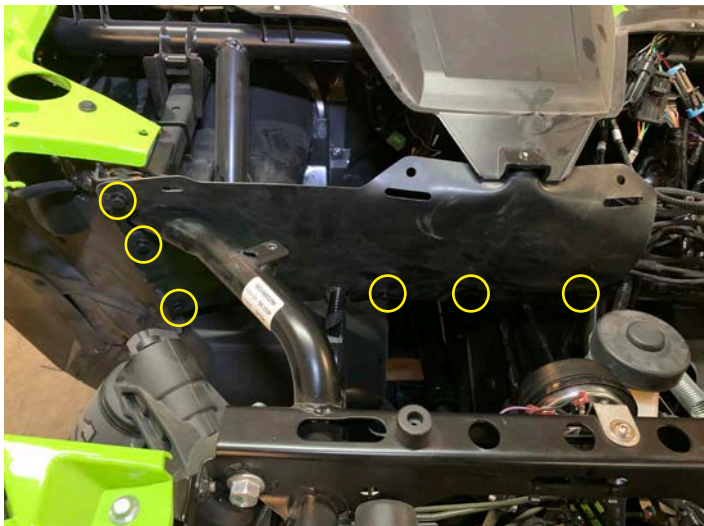
- Install two 12mm bolts on front of drivers seat



- Release latch at front of driver and passenger lower cushions to install



- Install new full mud guard with kit with 6 push pins previously removed and 8 new push pins in kit



Reassembly

- Install four 10mm bolts, four push pins, and five 5mm allen bolts to remove top of dash



- Install hood by turning two latches





FCC Notice

This equipment has been tested and found to comply with the limits for a Class B digital device, pursuant to part 15 of the FCC Rules. These limits are designed to provide reasonable protection against harmful interference in a mobile installation. This equipment generates, uses and can radiate radio frequency energy and, if not installed and used in accordance with the instructions, may cause harmful interference to radio communications. However, there is no guarantee that interference will not occur in a particular installation.

WARNING: Changes or modifications not expressly approved by the party responsible for compliance could void the user's authority to operate the equipment.

This equipment complied with FCC radiation exposure limits set forth for an uncontrolled environment. This equipment should be installed and operated with minimum distance 20cm between the radiator & your body.

WARRANTY

Maxxsonics USA Inc. warrants this product, to the original consumer purchaser, to be free from defects in material and workmanship for a period of one (1) year from the date of purchase. Maxxsonics USA Inc. will, at its discretion, repair or replace defective products during the warranty period. Components that prove to be defective in materials and workmanship under proper installation and use must be returned to the original authorized Maxxsonics USA Inc. retailer from where it was purchased. A photocopy of the original receipt must accompany the product being returned. The costs associated with removal, re-installation and freight are not the responsibility of Maxxsonics USA Inc. This warranty is limited to defective parts and specifically excludes any incidental or consequential damages connected therewith. To view the full warranty, please visit the website.

The Bluetooth® word mark and logos are registered trademarks owned by the Bluetooth SIG, Inc. and any use such marks by MB Quart is under license.

All product names, logos, and brands are property of their respective owners. All company, product and service names used in this literature are for identification purposes only. Use of these names, logos, and brands does not imply endorsement.

©2021 Maxxsonics USA, Inc.

MBQuart products are designed and engineered in the USA by

