



Installation Instructions

Model:	Honda Talon
Description:	Stage 5 Install
Part Number:	MBQT-SUB-1
Assembly Time:	60 Min (1-Hour)

Before you begin, read through these instructions and check that all parts are present. Always disconnect negative battery terminal, prior to installation. Please note that MB Quart cannot assume any responsibility for damage resulting from incorrect installation.

Parts List		
No.	Component Name	Qty
1	8" Subwoofer w/Enclosure (MBQT-SUB-1)	1
2	NA2-400.1 Amplifier	1

Tools Required	
1	Bojo Tool
2	Panel Clip Pliers
3	10mm open box wrench
4	10mm and 12mm socket
5	1/2" socket
6	Ratchet
7	Small flat head screwdriver
8	Phillips screwdriver
9	3mm and 5mm Allen Wrench
10	1/4" and 1/2" drill bit or stepper bit
11	1" hole saw
12	Drill
13	Rotary tool similar to a Dremel
14	Heat Gun or Lighter
15	Crimper

Disassembly

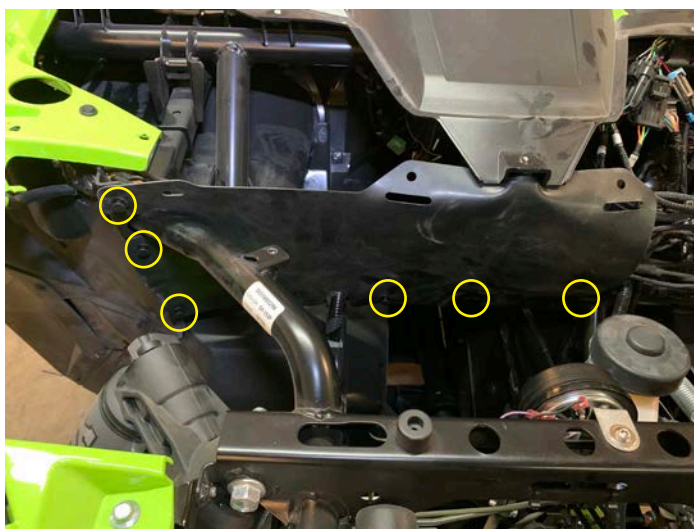
- Remove hood by turning two latches



- Remove four 10mm bolts, four push pins, and five 5mm allen bolts to remove top of dash



- Remove half mud guard with six push pins



Disassembly

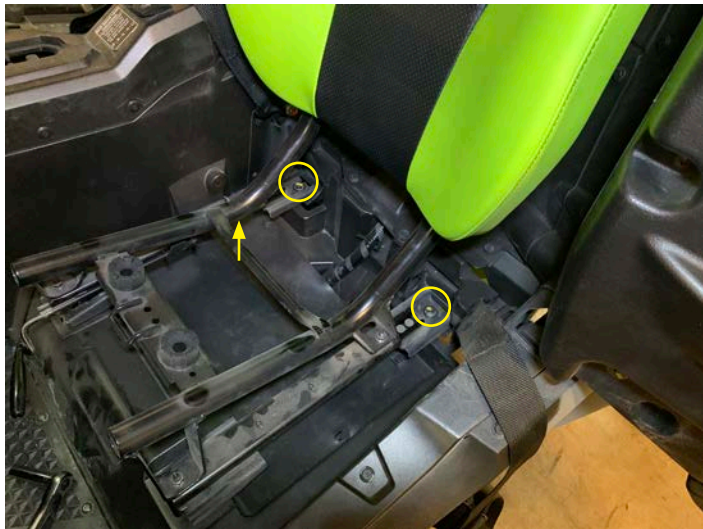
- Release latch at front of driver and passenger and lower cushions to remove



- Remove two 12mm bolts on front of drivers seat



- Slide driver seat forward and remove two 12mm bolts on rear of seat



Disassembly

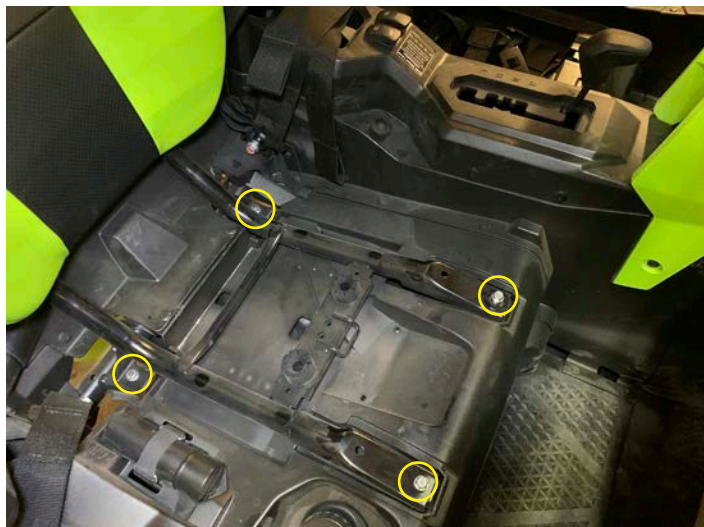
- Remove drivers seat



- Remove two push pins on front of passenger seat and then remove the covers



- Remove two 12mm bolts and two 12mm nuts on the passenger seat base

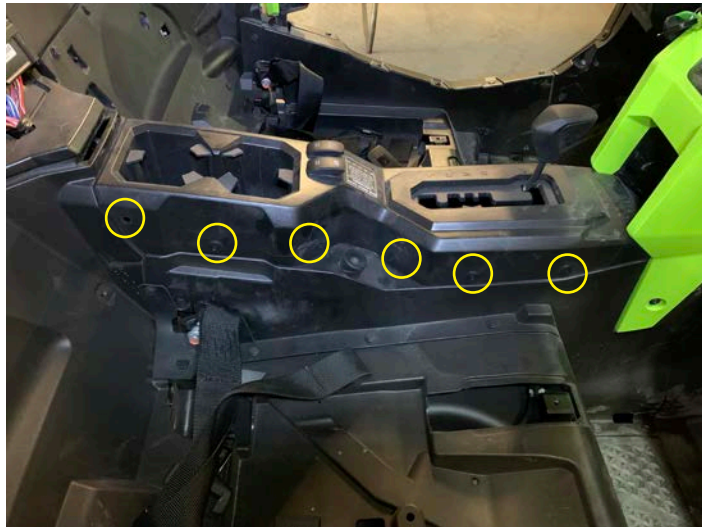


Disassembly

- Remove passenger seat from vehicle



- Using a small flat head screwdriver push in the center and remove the six clips on the passenger side



- Remove the five push pins on the driver side console like on the passenger side



Disassembly

- Place gear selector to “H” and remove the top of the center console



Amplifier Adjustment

- Adjust the NA2-400.1 amplifier gain and crossover settings as pictured.

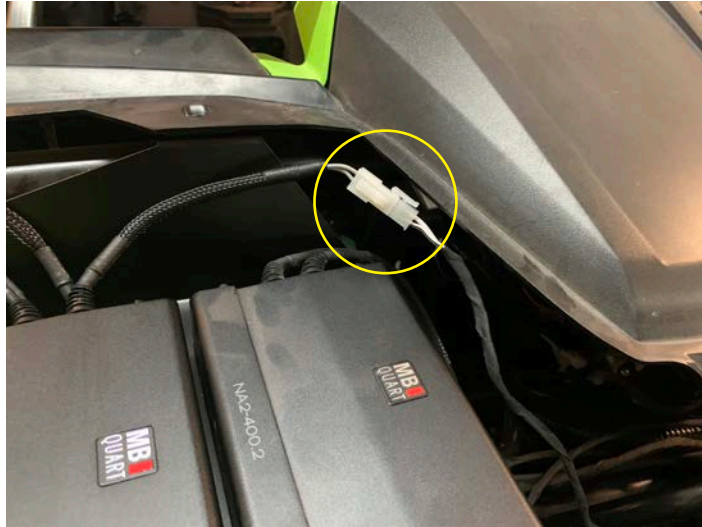
NOTE

Gains all to the last "L" on Level
Sub LPF to 100Hz going to "L" on LPF
Subsonic set to 35Hz going to "S" on
Subsonic Boost to 0dB



Wiring Installation

- Plug subwoofer extension harness into the NA2-400.1 amplifier



- Route subwoofer harness down toward center console going to the rear of the vehicle

NOTE

Use a fish tape passed from cabin toward front of vehicle to help pull wires

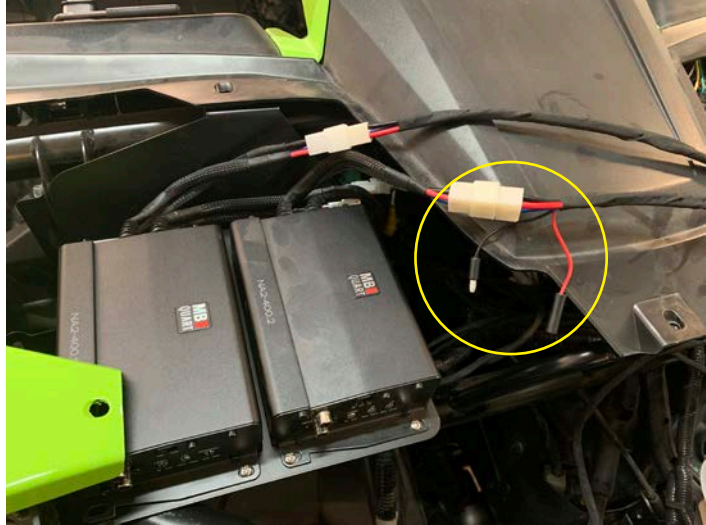


- Zip tie harnesses along with OEM harness



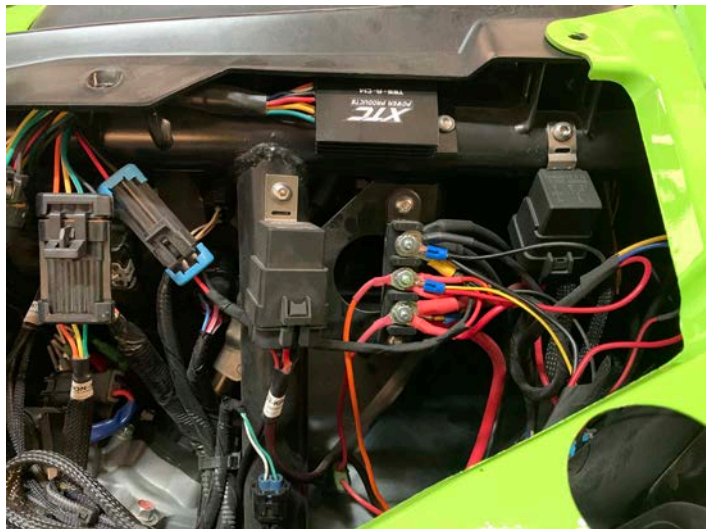
Wiring Installation

- Install power pigtail included with NA2-400.1 and make appropriate connections. Amplifier plate is NOT included with subwoofer kit.



- If no buss bar installed, you can connect to factory wiring but we highly recommend a buss bar kit

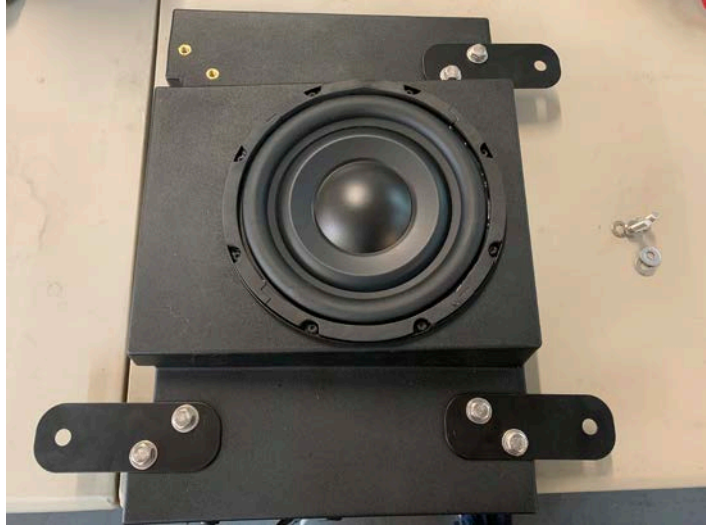
These are available from many aftermarket companies like XTC Power Products



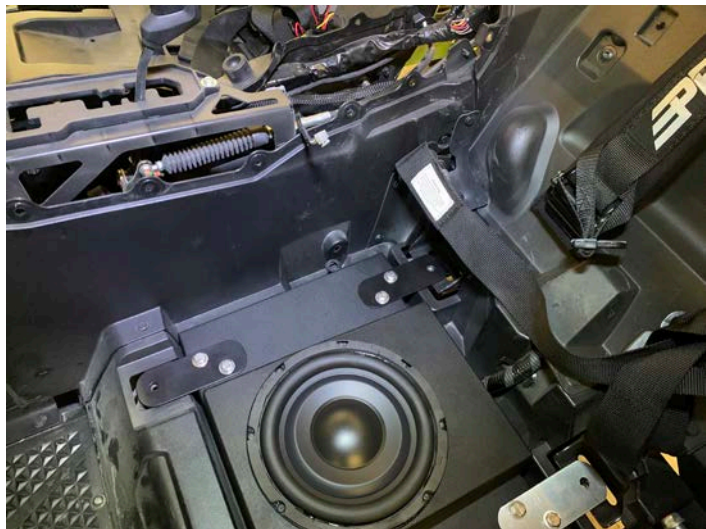
- Plug RCA into the NA2-400.2 and run to the front RCA outputs of the radio

Subwoofer Installation

- Install four brackets with 5/16 bolts and washers leaving them loose



- Place subwoofer enclosure under driver seat area and pass the harness through small opening pictured and pull toward top of center console



Subwoofer Installation

- Connect the subwoofer enclosure harness to the amplifier harness in center console



- Align plates to seat mount holes and tighten



- All plates aligned



Reassembly

- Place gear selector to “H” and install the top of the center console



- Install the five push pins on the driver side console like you did on the passenger side



- Using a small flat head screwdriver push in the center and install the six clips on the passenger side



Reassembly

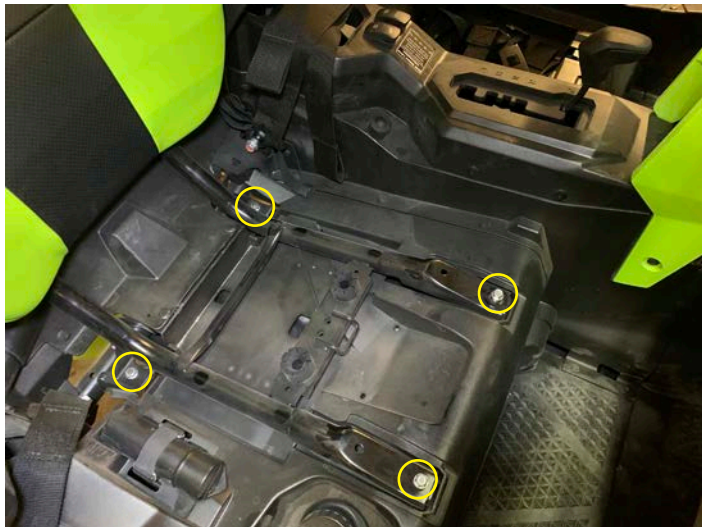
- Install top fuse access panel



- Install passenger seat from vehicle



- Install two 12mm bolts and two 12mm nuts on the passenger seat base

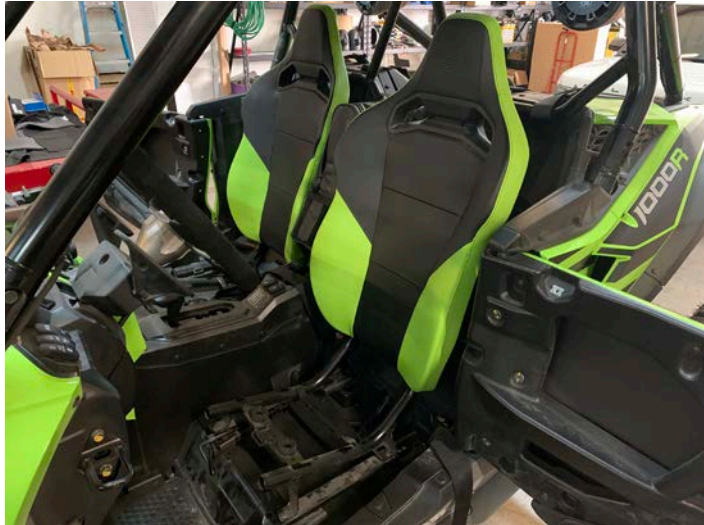


Reassembly

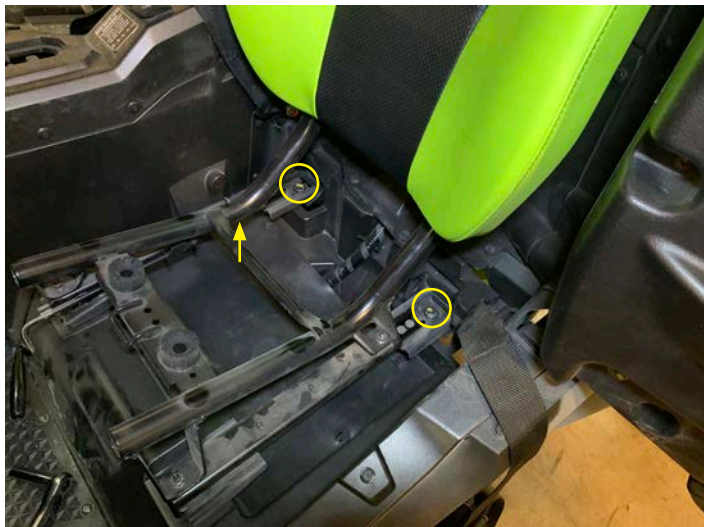
- Install two push pins on front of passenger seat and then remove the covers



- Install drivers seat



- Slide driver seat forward and install two 12mm bolts on rear of seat



Reassembly

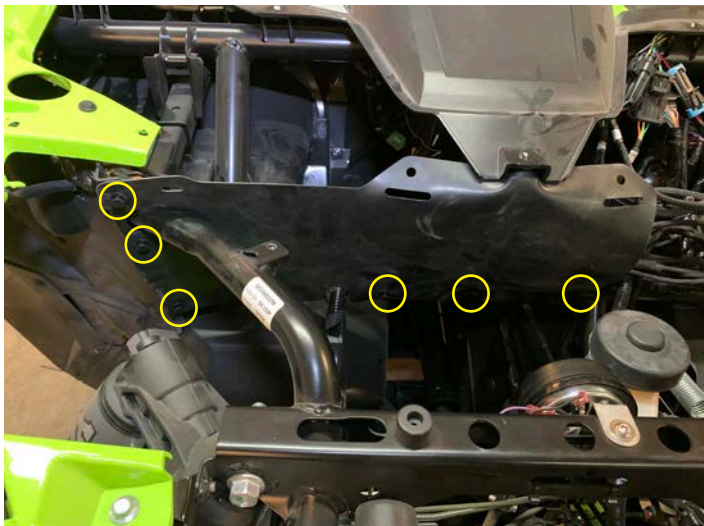
- Install two 12mm bolts on front of drivers seat



- Release latch at front of driver and passenger lower cushions to install



- Install half mud guard with 6 push pins



Reassembly

- Install four 10mm bolts, four push pins, and five 5mm allen bolts to remove top of dash



- Install hood by turning two latches





FCC Notice

This equipment has been tested and found to comply with the limits for a Class B digital device, pursuant to part 15 of the FCC Rules. These limits are designed to provide reasonable protection against harmful interference in a mobile installation. This equipment generates, uses and can radiate radio frequency energy and, if not installed and used in accordance with the instructions, may cause harmful interference to radio communications. However, there is no guarantee that interference will not occur in a particular installation.

WARNING: Changes or modifications not expressly approved by the party responsible for compliance could void the user's authority to operate the equipment.

This equipment complied with FCC radiation exposure limits set forth for an uncontrolled environment. This equipment should be installed and operated with minimum distance 20cm between the radiator & your body.

WARRANTY

Maxxsonics USA Inc. warrants this product, to the original consumer purchaser, to be free from defects in material and workmanship for a period of one (1) year from the date of purchase. Maxxsonics USA Inc. will, at its discretion, repair or replace defective products during the warranty period. Components that prove to be defective in materials and workmanship under proper installation and use must be returned to the original authorized Maxxsonics USA Inc. retailer from where it was purchased. A photocopy of the original receipt must accompany the product being returned. The costs associated with removal, re-installation and freight are not the responsibility of Maxxsonics USA Inc. This warranty is limited to defective parts and specifically excludes any incidental or consequential damages connected therewith. To view the full warranty, please visit the website.

The Bluetooth® word mark and logos are registered trademarks owned by the Bluetooth SIG, Inc. and any use such marks by MB Quart is under license.

All product names, logos, and brands are property of their respective owners. All company, product and service names used in this literature are for identification purposes only. Use of these names, logos, and brands does not imply endorsement.

©2021 Maxxsonics USA, Inc.

MBQuart products are designed and engineered in the USA by

